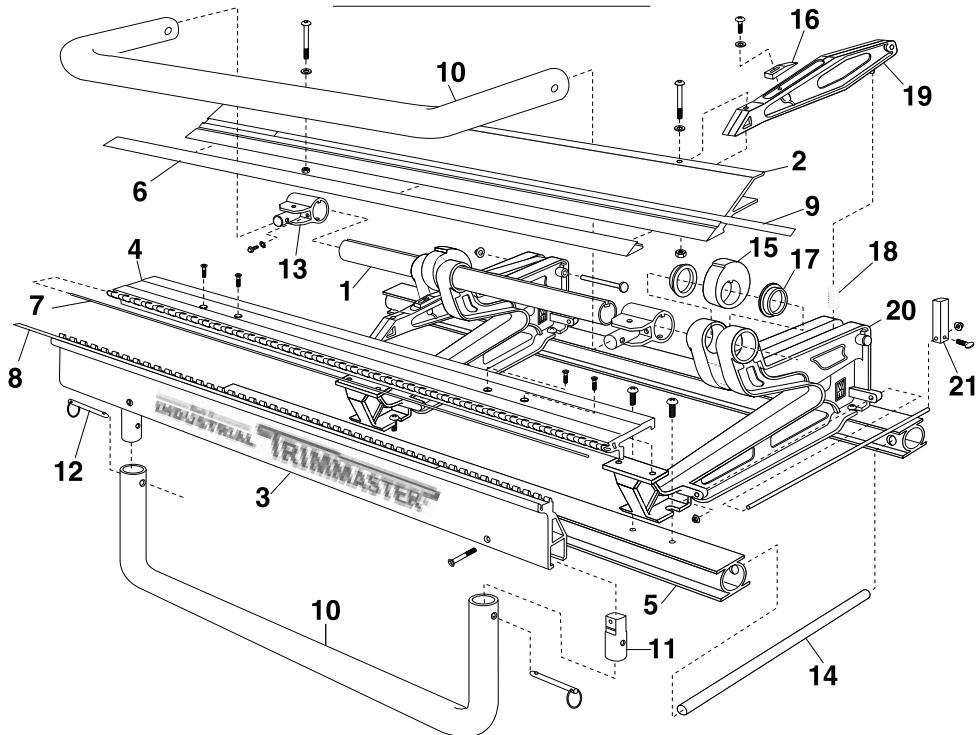


Parts List



Parts List

Mark IV Industrial TrimMaster®

IT863	IT1063	IT1263	IT1463
8'6"	10'6"	12'6"	14'6"

Ref	Description	Qty	Part No	Part No	Part No	Part No
1.	Cam Tube	1	4403	4404	4405	4406
2.	F Bar w/SS/TRule	1	3689	3690	3691	3692
3.	Front Hinge w/Strip	1	3695	3696	3697	3698
4.	Rear Hinge	1	4114	4115	4116	4117
5.	Base Rail	1	4124	4125	4126	4127
6.	Stainless Strip 2 pc	1	4543	4544	4545	4546
7.	Hinge Pin	1	4062	4063	4064	4065

Common Parts, All Models

Ref	Description	Qty	Part No	Ref	Description	Qty	Part No
8.	Vinyl Strip	2	3909	16.	Wedge Pads, UHMW	7	3905
9.	Tape Rule	1	4765	17.	Cam Tube Bearing	2	3901
10.	Handle	1	4831	18.	Pivot Arm Spring	4	3902
11.	Handle Post	2	3906	19.	Pivot Arm Casting	1	3904
12.	Handle Faspins	2	3655	20.	Base Casting	1	3905
13.	Locking Handle Brackets	2	4107	21.	Material Stop Assy.	2	3965
14.	Carrying Handle	2	3943	N/A	Tune Up Kit	1	3910
15.	Locking Cam	1	4801				

24145 Industrial Park Dr., Farmington Hills, MI 48335
 Toll Free No. 1-800-Van Mark Toll Free Fax 1-888-Van Mark
 Local Phone No. 1-248-478-1200 Local Fax No. 1-248-478-1226
 Web site: www.van-mark.com E-mail sales@van-mark.com

USER'S GUIDE

Mark IV
INDUSTRIAL TRIMMASTER®



CONTENTS

2. Installing top handle
2. Installing bottom handle
2. Fine Tune Adjustments (FTA)
3. Using the material stops
3. Xtreme Stand Parts List
4. Exploded view/parts list



Van Mark

"Products Engineered to Bring Out the Best in Your Work"

Install Top Locking Handle

2

Unpack contents of box and locate the top Locking Handle. Align holes in each handle end with holes in handle plug. Insert faspin through holes at each end of handle.

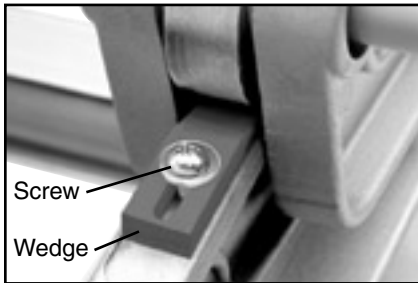


Install Bottom Bending Handle

Align holes in ends of bottom bending handle with holes in the bending handle plugs. Insert faspins to secure in place.



Making Fine-Tune Adjustments



Your Van Mark brake has been pre-adjusted at the factory for optimum performance. Should you want to Fine-Tune your machine, follow the basic steps outlined below.

STEP 1. Cut 4 inch square samples of material you want to adjust your brake to bend (1 for each casting).

STEP 2. Insert 2 inches of the samples into the mouth of the brake at each casting. Lock brake.

STEP 3. Attempt to pull each sample straight out and determine through feel that each one is held with equal pressure. If you can pull a sample out, that casting requires adjustment.

STEP 4. To make adjustment, open brake and loosen screw. Slide wedge toward back of brake an 1/8 inch then retighten and retest. Repeat step until desired locking pressure is achieved.

Using the Material Back Stops

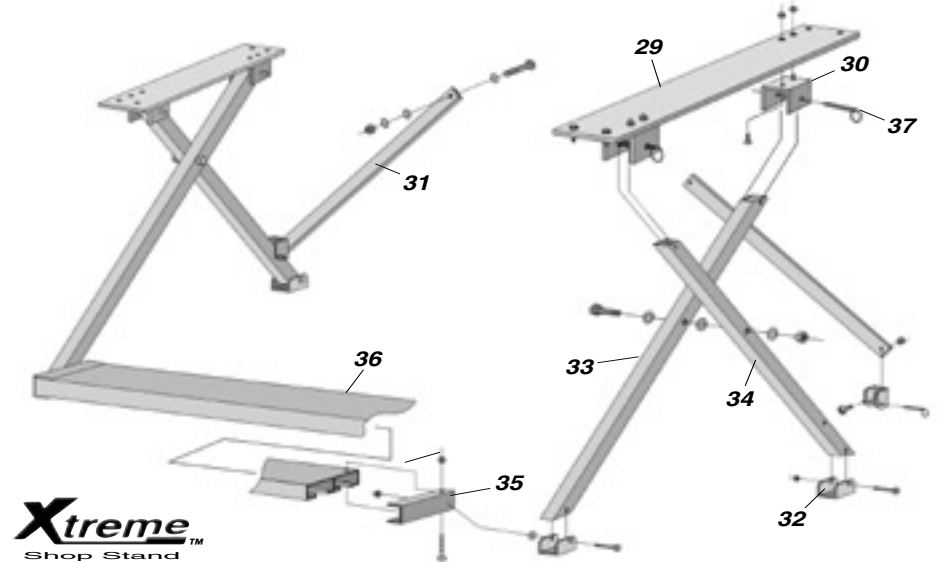
3

Tighten thumb screw to lock the stop block in place. Repeat tightening of opposite stop block and recheck measurements using a tape rule.



With the mouth of the brake still open, insert material up to both stop blocks and lock in place. Periodically check measurements to ensure stop block hasn't moved.

Parts List, Xtreme™ Shop Stand



Xtreme™
Shop Stand
Patent No's 6,435,460 D437,864

Ref	Description	Per Unit	Needed	Part #
29	Leg Plate	1 ea	2 ea	4844
30	Leg Bracket	1 ea	4 ea	4845
31	Leg Brace	1 ea	2 ea	4846
32	Leg Foot	1 ea	6 ea	4847
33	Front Leg	1 ea	2 ea	4848
34	Rear Leg	1 ea	2 ea	4849
35	Platform Bracket	1 ea	2 ea	4851
36	Platform	1 ea	1 ea	4852
37	Faspin 5/16 x 2	1 ea	6 ea	2715