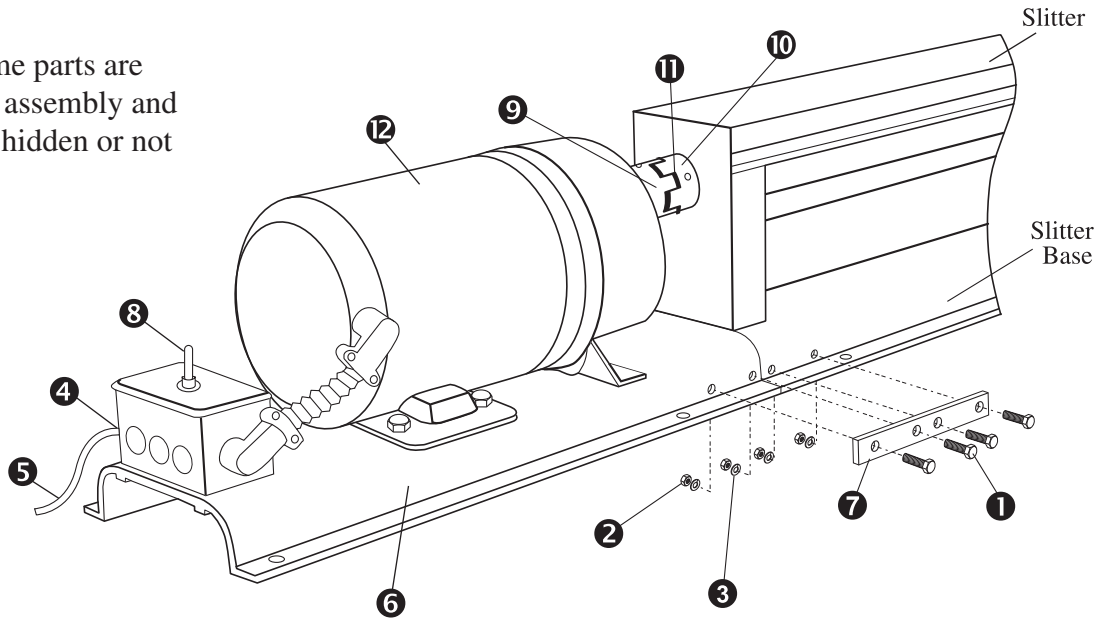
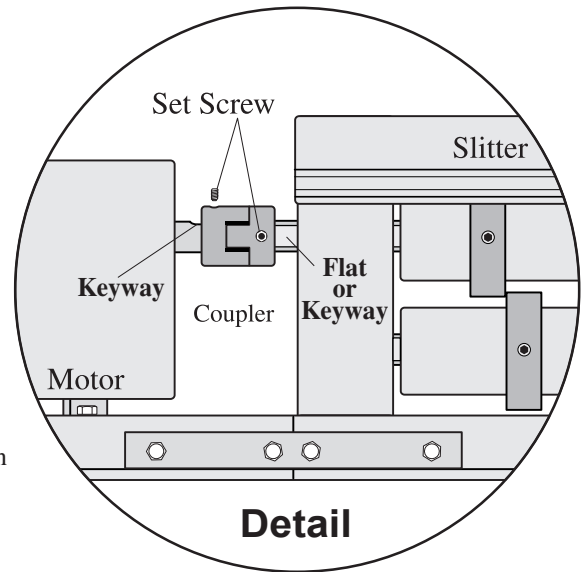


Note: Some parts are part of an assembly and are either hidden or not shown.



- Step 1. Attach one strap to each side of motor base using two 1/4" x 1" screws, hex nuts and lock washers each. Leave finger-tight for now.
- Step 2. Slide motor base against slitter base positioning the coupler onto shafts (see detail). Both base members and straps should line up with no gaps or spaces. Ensure coupler slides freely on the shafts.
- Step 3. Using the straps as drill-guides, drill one 1/4" hole and loosely install a screw, lock washer, then a hex nut. Repeat with opposite strap, then remaining two holes (remember to keep both base members aligned with each other with no spaces or gaps).
Tighten all screws and hex nuts to complete this step.
- Step 4. Rotate couplers until set screws align with either the keyways or flats on shafts and tighten.



Ref	Description	Qty	Part No
1	SC 1/4-20X1 Hex	8	2061
2	1/4-20 Hex Nut	8	2300
3	1/4 Lock Washer	8	2500
4	Wire To Box Connector	1	5077
5	Elec. Cord	1	5076
6	Motor Base	1	5085
7	Motor Base Straps	2	5086
8	Toggle Switch	1	5087

Ref	Description	Qty	Part No
9	Motor Coupler 3535	1	5124
9	Motor Coupler 3521/3522	1	5081
10	Slitter Coupler 3535	1	5021
10	Slitter Coupler 3521/3522	1	5080
11	Coupler Insert 3535	1	5094
11	Coupler Insert 3521/3522	1	5098
12	Motor 3535	1	5084
12	Motor 3521/3522	1	5121